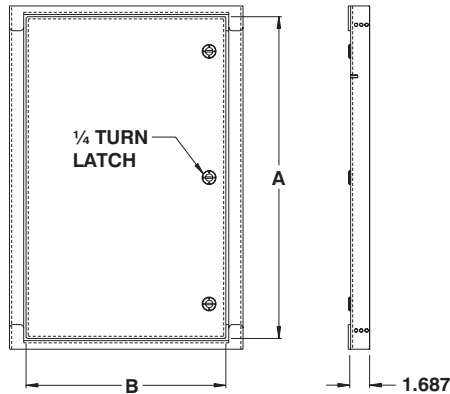


SWING OUT PANELS

Swing out panels for medium to large enclosures

The **880 SKWHD** swing out panels for medium to large enclosures are made to be used with all single door enclosures 12" to 72" high. Kits can be mounted by piercing small holes on the sides of the enclosures and are mount-

ed with screws. All hardware and mounting instructions are included. Finish is ANSI/ASA 61 gray heat fused polyester powder, electrostatically applied on a pretreaded base.

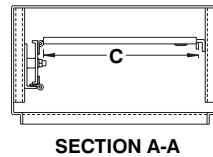
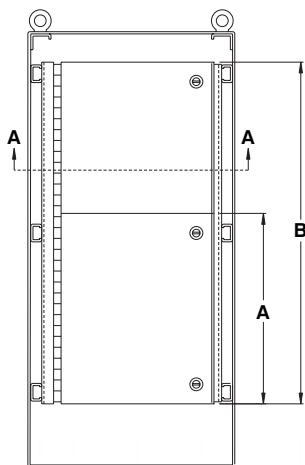


CATALOG NUMBER	DIMENSIONS		SHIP WGHT LBS.
	A	B	
880 SKWHD1212	9.500	9.000	2
880 SKWHD1224	9.500	21.000	7
880 SKWHD1612	13.500	9.000	4
880 SKWHD1616	13.500	13.000	6
880 SKWHD1620	13.500	17.000	7
880 SKWHD2012	17.500	9.000	6
880 SKWHD2016	17.500	13.000	7
880 SKWHD2020	17.500	17.000	9
880 SKWHD2024	17.500	21.000	13
880 SKWHD2412	21.500	9.000	7
880 SKWHD2416	21.500	13.000	9
880 SKWHD2420	21.500	17.000	13
880 SKWHD2424	21.500	21.000	15
880 SKWHD2430	21.500	27.000	19
880 SKWHD3012	27.500	9.000	14
880 SKWHD3016	27.500	13.000	15
880 SKWHD3020	27.500	17.000	16
880 SKWHD3024	27.500	21.000	19
880 SKWHD3030	27.500	27.000	24
880 SKWHD3036	27.500	33.000	20
880 SKWHD3624	33.500	21.000	24
880 SKWHD3630	33.500	27.000	30
880 SKWHD3636	33.500	33.000	37
880 SKWHD4224	39.500	21.000	28
880 SKWHD4230	39.500	27.000	35
880 SKWHD4236	39.500	33.000	43
880 SKWHD4824	45.500	21.000	32
880 SKWHD4830	45.500	27.000	40
880 SKWHD4836	45.500	33.000	49
880 SKWHD6036	57.500	33.000	61
880 SKWHD7230	69.500	27.000	70
880 SKWHD7236	69.500	33.000	32

Swing out panels for free standing enclosures

The **889 SW** swing out panels are made from 11 GA steel. Panels are hinged continuously on one side and are secured with quarter turn latches. Panels mount easily

on channels provided in the cabinet. Finish is white heat fused polyester powder, electrostatically applied on a pretreaded base.



CATALOG NUMBER	DIMENSIONS HALF PANEL		SHIP WGHT LBS.
	A	C	
889 SWH6018	24	12	17
889 SWH6024	24	18	26
889 SWH7218	30	12	22
889 SWH7224	30	18	32
889 SWH7230	30	24	43
889 SWH7236	30	30	54
889 SWH9024	39	18	42
889 SWH9036	39	30	70

CATALOG NUMBER	DIMENSIONS FULL PANEL		SHIP WGHT LBS.
	A	C	
889 SWF6018	48	12	34
889 SWF6024	48	18	52
889 SWF7218	60	12	44
889 SWF7224	60	18	64
889 SWF7230	60	24	86
889 SWF7236	60	30	108
889 SWF9024	78	18	84
889 SWF9036	78	30	140

Data subject to change without notice.