

iText HMI



INDUSTRIAL CONTROL DIRECT
A B&D Industrial Company



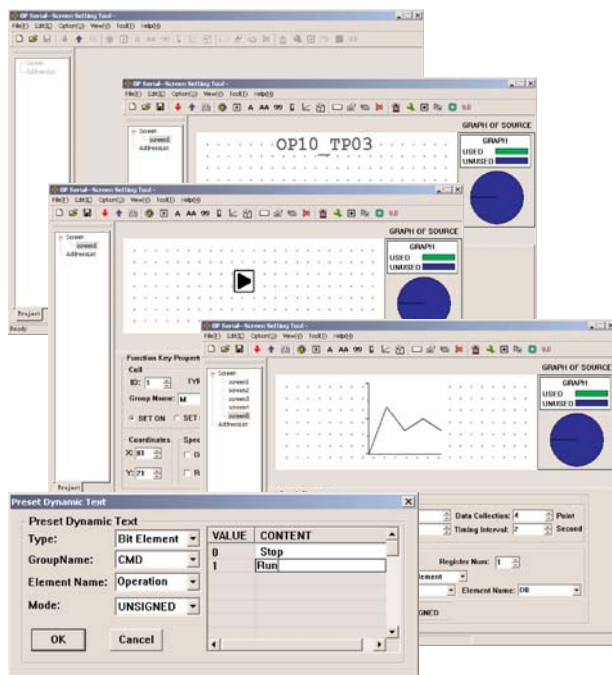
The iText 10 monochrome HMI offers a simple but powerful user interface for the iSmart programmable logic relay. Monitor data registers in real time, change parameters, perform switching functions, list alarms and transfer data.

- 192 x 64 pixel display
- 24-key keypad
- Two serial ports:
 - COM1 supports programming and point-to-point communications.
 - RS485 supports multi-drop networks
- Supports modbus RTU
- Password protection
- Import bitmaps
- Offline program simulation
- Bar graphs, trend charts, alarm logging

FREE Programming Software

Programme the iText using simple fill in the blank object windows. Establish network links to remote devices. Create dynamic text, trend charts, bar graphs, alarm logs and more. View and verify your program in simulation mode.

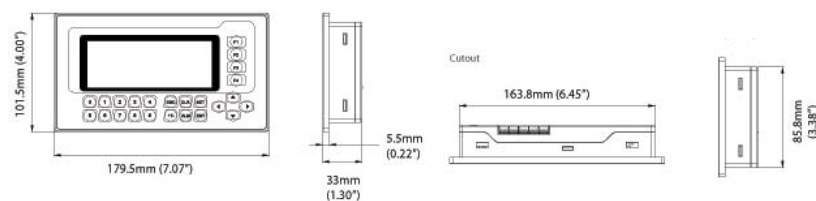
Download software free at www.imopc.com



Part Number	Description	Price (£)
iText	4.3" Monochrome Graphic Panel, 192 x 64 pixels, 4 Function Keys, Numeric Keypad, 2 serial ports, 24VDC input power	158.00
iTEXT-PRG	Cable (9-pin serial, PC to 9-pin Serial, OP10)	22.76
iTEXTCONFIG	Programming S/W FREE via download	FREE
PC501	USB to Serial (DB-9 male) Converter Cable	42.43
SMT-PL03	iTEXT to iSMART cable	22.76

General Specification	
Power	DC24V, -15% - +10%
Current Consumption	80mA Max
Approvals	UL, CE
Communication Interface	COM1: (9-pin, D-SUB, female) RS-232/422; RS485: terminal screws
Environmental Rating	IP65 (front of panel)
Maximum Devices	8 without repeater; 255 with repeater
Dimensions	179.5 x 101.5 x 33mm (7.07 x 4.00 x s.30")
Weight	460g (~1 lb)
Environmental	
Operating Temperature	8°C ~ 55°C (32°F - 131°F)
Storage Temperature	-40°C ~ 70°C (-40°F - 158°F)
Relative Humidity	10% ~ 95% non-condensing
Vibration	1.75mm displacement, 5 - 9 Hz
Impact	15G, 11ms, vertical from X, Y, Z directions

Dimensions



Communication with one iSmart via programming port



Multi-drop Modbus communications over RS485 network

