



Panel-Point Quick Start Guide

Introduction

Panel-Point is a PC based mini SCADA package which can run on a Microsoft Windows based system. The system can run on Windows 2000, Windows XP or better. Embedded Windows XP is also supported. The target machine can be any type of PC, a standard desktop, a small touch screen system running embedded XP, or even a full blown Panel-PC.

The system is configured using the Configuration Manager software, in the same way as configuring an MI Series HMI, but with far more features. The system supports everything the Midrange HMI's support, including scripting, recipes and actions. Screens have a full colour graphical capability, with shapes, lines, colour bitmaps and animation. All system fonts are supported for static text and point values.

Instead of function keys, Panel-Point has 'touch' objects. Any object can have a touch property, which triggers an action like functions keys on the HMI range. Where a touch screen is available these are really touch objects on the screen, otherwise they are objects which can be clicked with a mouse.

Screens of all popular resolutions can be configured, as well as custom resolution screens. When a panel is added to the project, the resolution is configured.

The runtime software (Panel-Point itself) is installed separately to the Configuration Software, and can exist either locally or on another machine. In the same way as we download a configuration via a serial link to a HMI, we can download a configuration over Ethernet from the 'configuration' machine to the 'runtime' machine.

Printing support is available via any connected printer, USB, parallel or network printers.

Communications are provided by a central OPC Server, based on IMO's 'Odin' product.

All protocols supported by the HMI's are available, with the addition of network protocols. Communications are provided by the serial ports available on the machine, and also via TCP/IP.

Since the comms engine is an OPC Server, data is available to any third party OPC Client software, either running locally or on another machine on the network.

Historical data logging can be added using IMO's Loki data logger software, this is included with the Panel-Point software.

Logging of Alarms and Events is available with Panel-Point as on the HMI range. A log viewer can be added to any graphics screen.

The software runs on Microsoft Windows 2000, Windows XP, or better.

Thank you for choosing Panel-Point and IMO software.

Installing the Software

Configuration Manager and Panel-Point are supplied together on a CD or within a 'zip file' from an Internet download. If you have a zip file you will need to unzip the contents to a folder before proceeding.

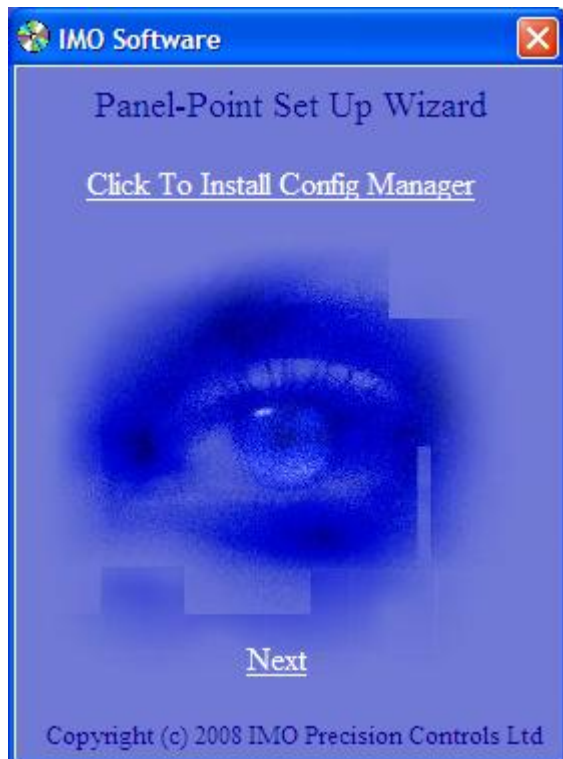
A CD will 'autorun' when it is inserted. If not, or if you have the installation on your hard drive simply click on 'setup' to install the products.

The following window will appear:



Here you have the option of installing the 'Developer Suite', which includes both Configuration Manager and the Panel-Point Runtime application, or just the Runtime software only. You can also view the data sheets for Panel-Point and the Loki Data Logging software to read more about them.

If you choose to install the 'Developer Suite', then the following window is shown:



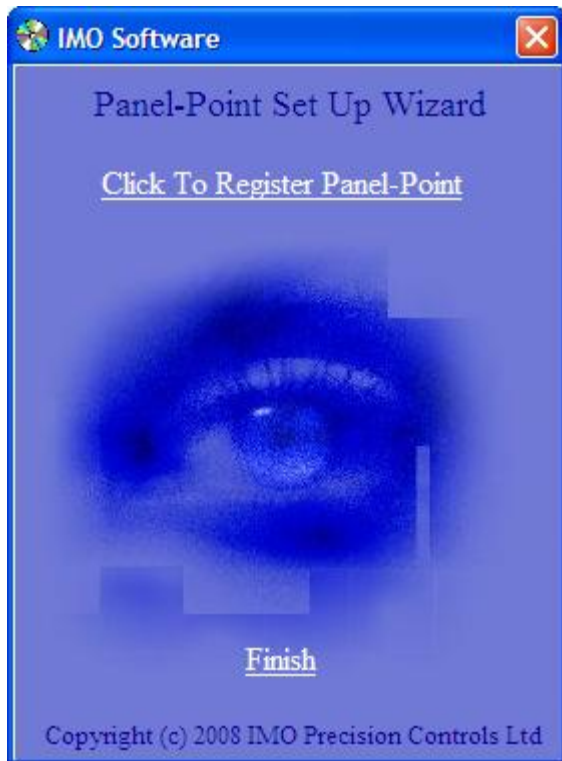
Click to install the software. A standard installation program will run which guides you through the software installation. Once complete click 'next' on the original window.

After pressing next, or if you only selected installation of the runtime software on the first screen, the following window is shown:



Again click to install the software and follow the on screen instructions. Once complete click 'next' to continue.

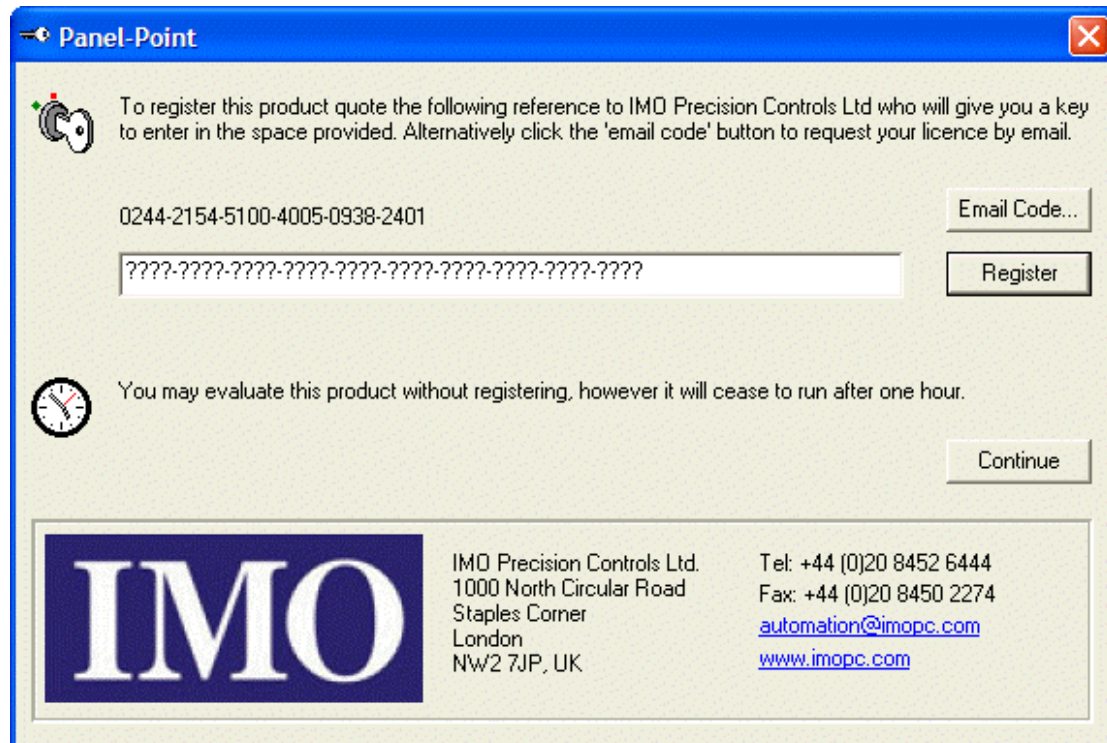
The following window will be shown:



If you click to register then the Panel-Point Runtime software will be run for the first time, allowing you to register your product. Please continue to the next section for instructions.

Panel-Point Licensing

When Panel-Point is run for the first time it requires licensing. The following dialog will appear:



The image shows a Windows-style dialog box titled "Panel-Point". It has a blue title bar with a close button (X) in the top right corner. The main area has a light beige background. At the top left, there is a small icon of a hand holding a key. To its right, the text reads: "To register this product quote the following reference to IMO Precision Controls Ltd who will give you a key to enter in the space provided. Alternatively click the 'email code' button to request your licence by email." Below this text, there is a text field containing the number "0244-2154-5100-4005-0938-2401". To the right of this field is a button labeled "Email Code...". Below the text field is another text field containing a series of question marks: "????-????-????-????-????-????-????-????-????-????". To the right of this field is a button labeled "Register". Below these fields, there is a clock icon on the left and the text: "You may evaluate this product without registering, however it will cease to run after one hour." To the right of this text is a button labeled "Continue". At the bottom of the dialog, there is a section with a dark blue background on the left containing the "IMO" logo in white. To the right of the logo, the text reads: "IMO Precision Controls Ltd. 1000 North Circular Road Staples Corner London NW2 7JP, UK". To the right of this text, the contact information is listed: "Tel: +44 (0)20 8452 6444 Fax: +44 (0)20 8450 2274", followed by two lines of email and website addresses: "[automation@imopc.com](\"mailto:automation@imopc.com\")" and "[www.imopc.com](\"http://www.imopc.com\")".

Panel-Point

To register this product quote the following reference to IMO Precision Controls Ltd who will give you a key to enter in the space provided. Alternatively click the 'email code' button to request your licence by email.

0244-2154-5100-4005-0938-2401

????-????-????-????-????-????-????-????-????-????

Email Code...

Register

You may evaluate this product without registering, however it will cease to run after one hour.

Continue

IMO

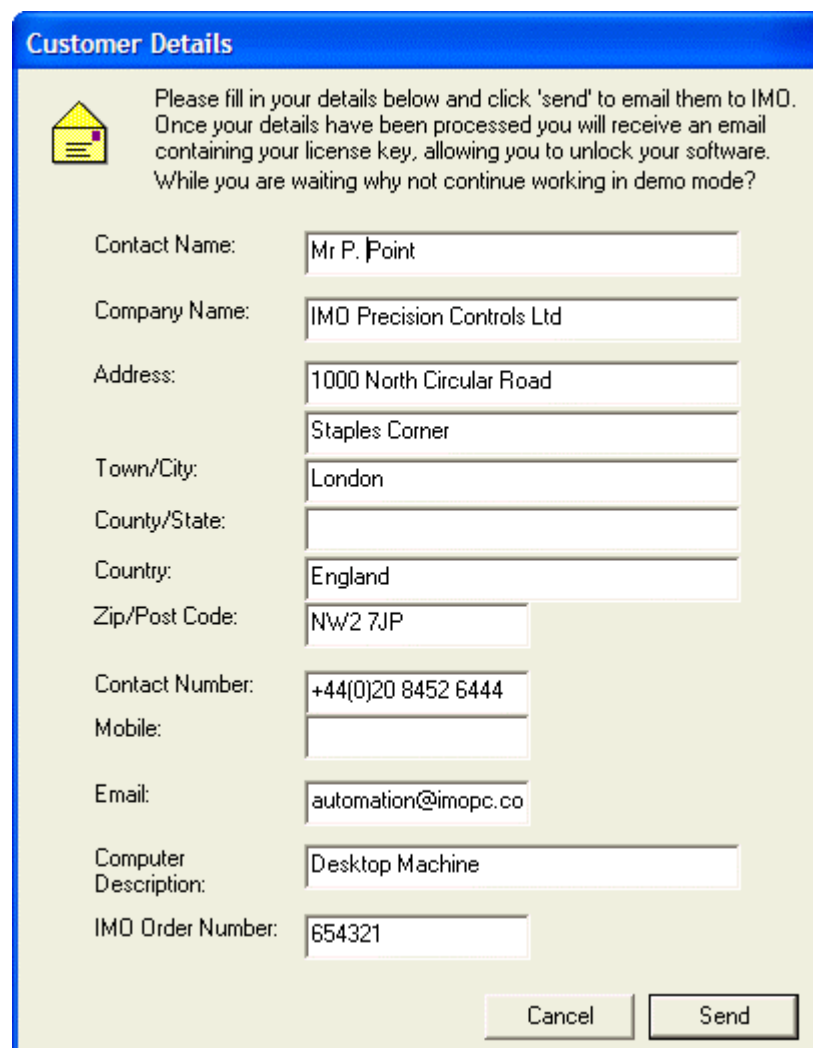
IMO Precision Controls Ltd.
1000 North Circular Road
Staples Corner
London
NW2 7JP, UK

Tel: +44 (0)20 8452 6444
Fax: +44 (0)20 8450 2274
automation@imopc.com
www.imopc.com

If you click 'continue' the software will start in demo mode. Each screen will contain a watermark, and comms will stop working after one hour.

Please contact IMO Precision Controls to obtain a license number, quoting the code given to you above. Once entered the license number will unlock the software and will not need to be entered again.

Alternatively you can click 'email code', which will bring up the following registration form:



The image shows a 'Customer Details' registration form. It has a blue title bar and a yellow envelope icon. The form contains several text input fields for personal and company information, with some fields pre-filled. At the bottom are 'Cancel' and 'Send' buttons.

Customer Details

Please fill in your details below and click 'send' to email them to IMO. Once your details have been processed you will receive an email containing your license key, allowing you to unlock your software. While you are waiting why not continue working in demo mode?

Contact Name: Mr P. Point

Company Name: IMO Precision Controls Ltd

Address: 1000 North Circular Road
Staples Corner

Town/City: London

County/State:

Country: England

Zip/Post Code: NW2 7JP

Contact Number: +44(0)20 8452 6444

Mobile:

Email: automation@imopc.co

Computer Description: Desktop Machine

IMO Order Number: 654321

Cancel Send

Simply fill in your details and click send. This will generate a pre-typed email in your default email client. You only need to click 'send' to email all the details IMO will require to provide you with a license code.

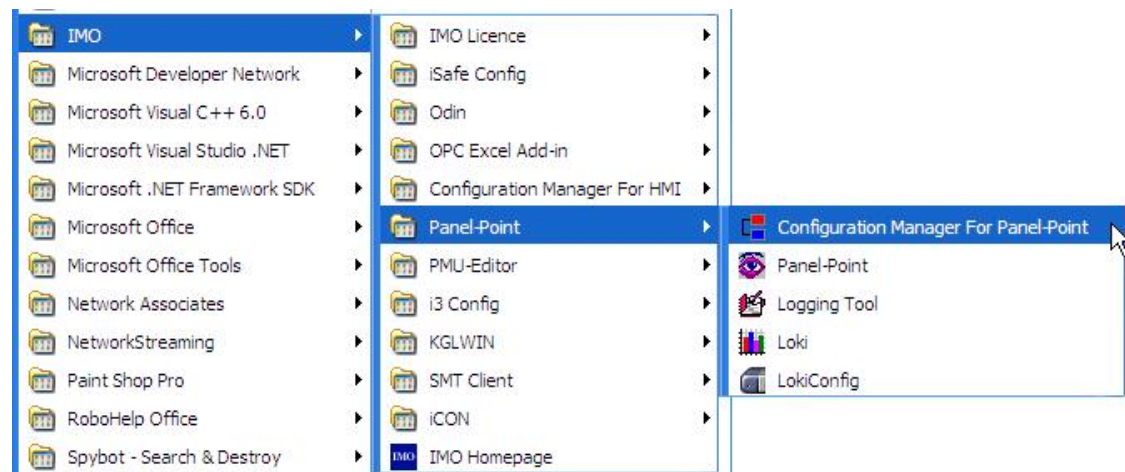
If you already know your order number make sure you have filled it in, as this will make processing of your license application easier.

You will receive your license key by return email. Simply enter it next time you run the software.

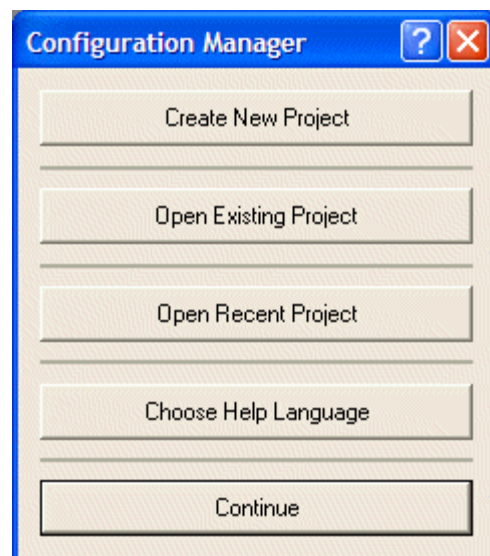
The license will either be 'runtime only' or 'full', only a 'full' license allows you to create projects for anything other than a demo system using Configuration Manager.

Running Configuration Manager

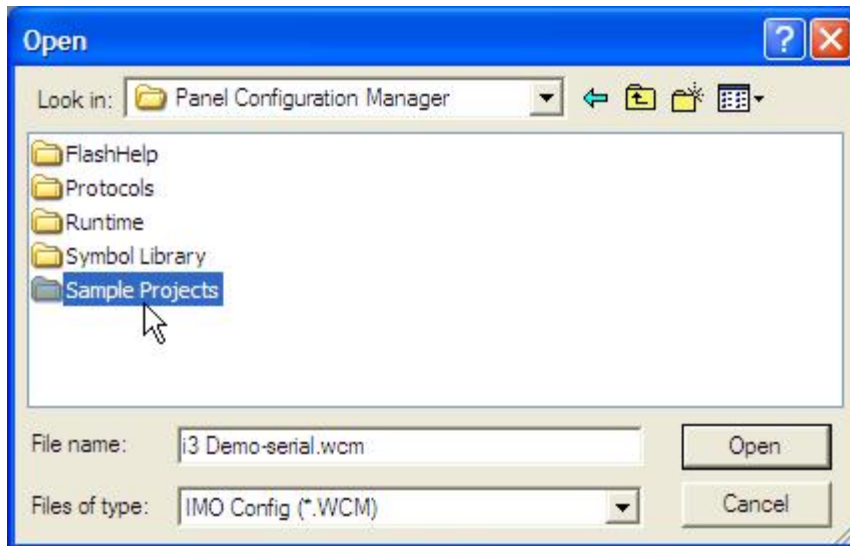
The Configuration Manager Software can be run either from the desktop shortcut, or from the IMO program group in the start menu:



When the software has loaded you will see the following dialog:



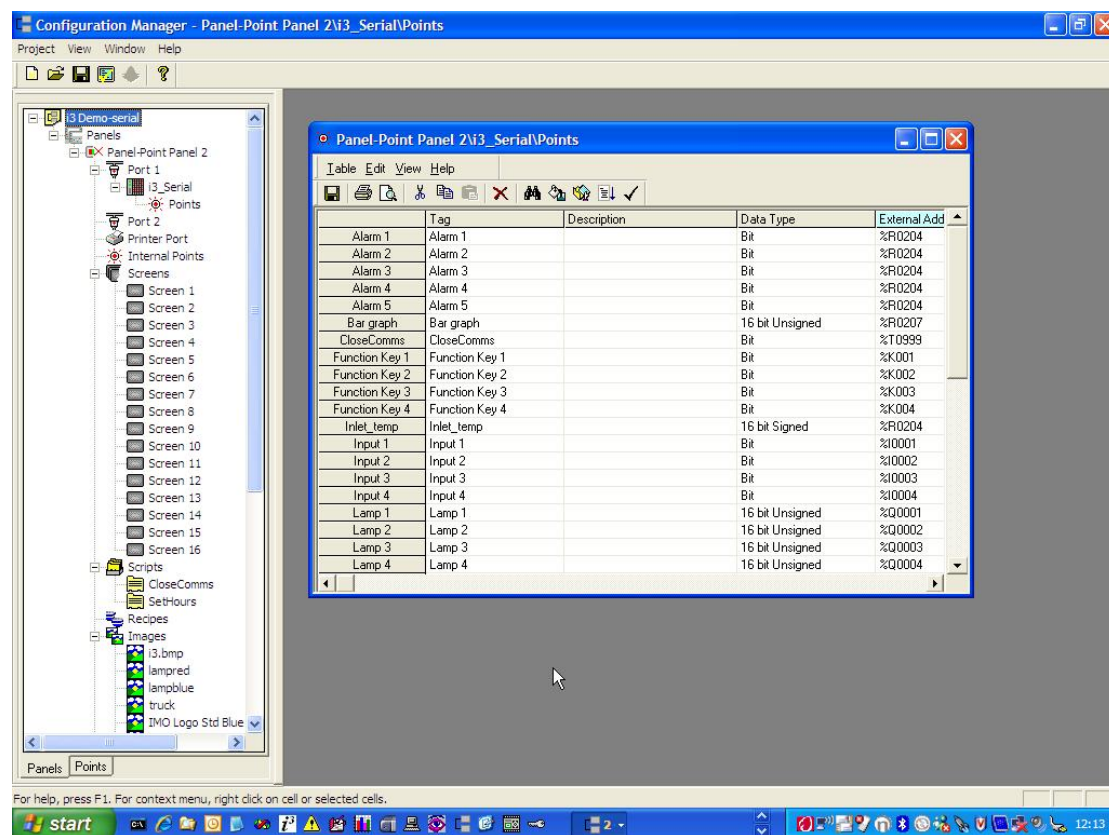
We suggest that first time you look at our sample project. Click 'open existing project', a standard file browser will appear:



Navigate to the 'Sample Projects' folder, which by default can be found in the following place:

C:\Program Files\IMO\Panel Configuration Manager

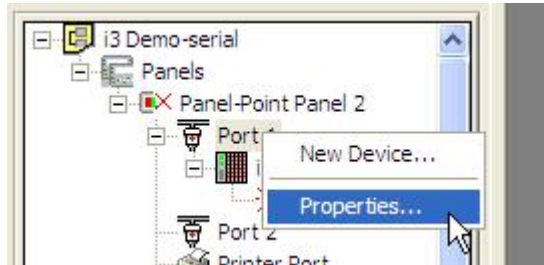
Now open the file 'i3 Demo-serial.wcm'. Your screen will look something like this:



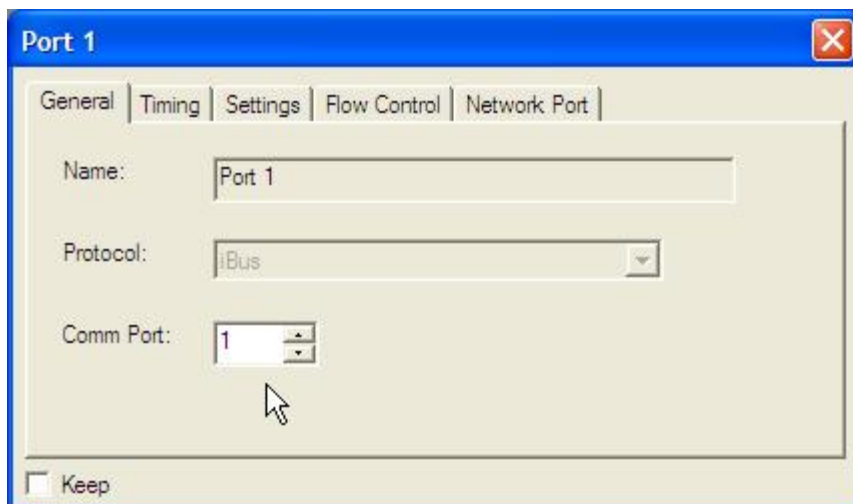
If you are an IMO *i3* customer, then a sample program for the *i3* is included to accompany this Panel-Point program. This is located in the same folder and is called 'i3A_demo_prog_PP.csp'.

The program will communicate with an *i3* controller over a serial link (you can use your programming cable). By default the comms port on the PC is set to COM1. You can change this by doing the following:

Right click on the port object in the tree on the left hand side and select 'properties':



The following properties page will appear. Simple change the com port number and close the box with the 'X' in the top right corner:



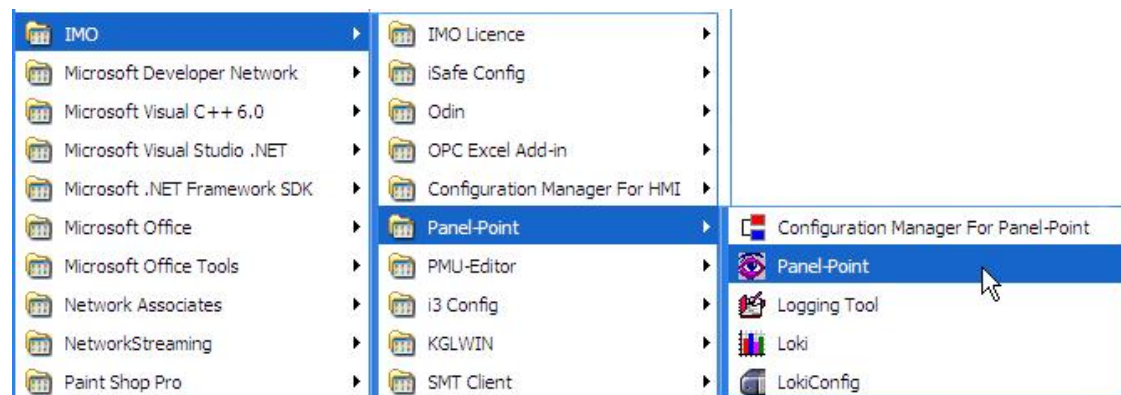
Now you are ready to build the project and try it out on your local machine. Simply click the 'prepare download' option from the toolbar:



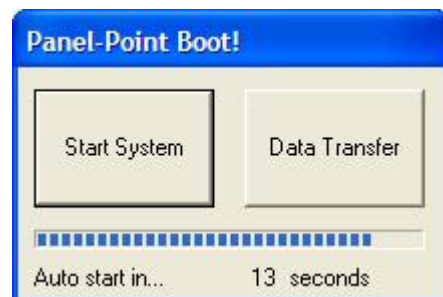
Close the results window that appears when the process has finished. You can then exit the Configuration Manager software.

Running The Panel-Point Runtime

The Panel-Point Runtime Software can be run either from the desktop shortcut, or from the IMO program group in the start menu:



The following dialog appears when the software is run:



You can either click 'start system' to start now, or wait for the count down to start automatically. Clicking the 'data transfer' button puts the runtime software into a mode where it will receive a project from Configuration Manager running on another machine on the network. Please see the Config Manager help file for more information.

When the system starts you will see the following screen:



The screens within the demo are navigated by pressing the top left key on the *i*³ control pad.

Further information on configuring and running your own project is available in the Configuration Manager help file.

Thank you for choosing IMO software.

Copyright © 2008, IMO Precision Controls Ltd

